

LUKOIL IN RUSSIA AND THE WORLD



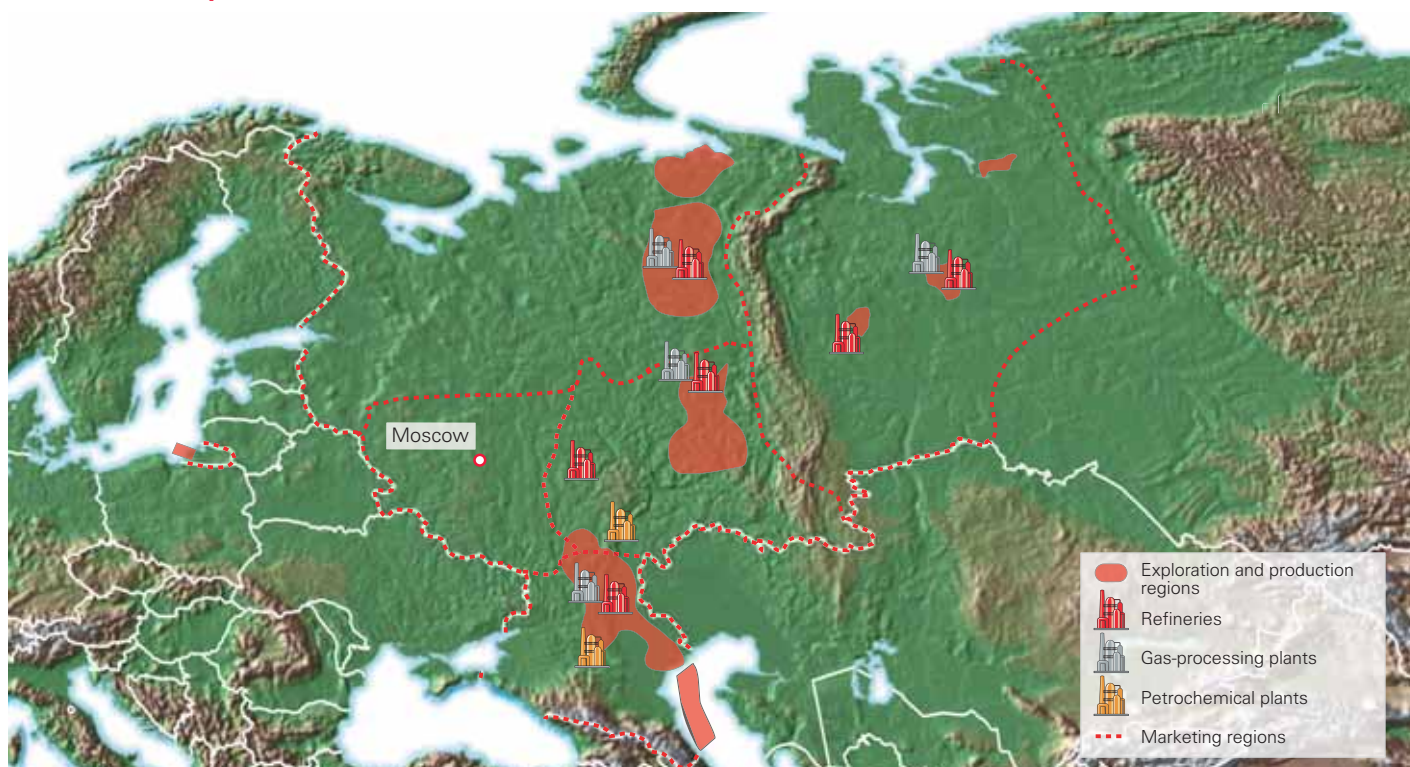
Share of LUKOIL Group in the global oil & gas industry, %

	2004	2005	2006	2007	2008
Proved oil reserves	1.32	1.32	1.28	1.25	1.15
Proved gas reserves	0.40	0.41	0.43	0.45	0.45
Proved hydrocarbon reserves	0.90	0.91	0.90	0.88	0.82
Oil production	2.14	2.20	2.32	2.35	2.29
Gas production	0.24	0.27	0.56	0.56	0.63
Hydrocarbon production	1.48	1.52	1.69	1.70	1.68
Refining capacities	1.38	1.37	1.35	1.34	1.51
Refinery throughputs	1.20	1.28	1.31	1.39	1.50

Share of Russian entities of LUKOIL Group in the Russian oil & gas industry, %

	2004	2005	2006	2007	2008
Proved oil reserves	20.2	20.0	19.4	18.9	18.3
Proved gas reserves	1.4	1.4	1.5	1.5	1.5
Proved hydrocarbon reserves	5.7	5.7	5.7	5.7	5.3
Oil production wells	17.0	17.4	17.4	17.5	17.7
Oil production	18.03	18.36	18.64	18.54	18.41
Gas production	0.79	0.89	2.14	2.09	2.14
Hydrocarbon production	8.98	9.27	10.06	10.09	10.14
Oil exports	20.75	18.94	17.92	16.66	16.52
Refining capacities	15.6	15.4	16.2	16.2	16.2
Refinery throughputs	18.32	18.05	18.05	18.69	18.75
Petroleum product exports	17.42	17.21	20.04	22.35	22.36

LUKOIL Group activities in Russia



Comparison of LUKOIL Group indicators in Russia with national averages

	2004	2005	2006	2007	2008
Flow rate of oil wells, tons per day					
LUKOIL	10.7	11.1	11.2	11.0	10.5
National average	10.3	10.4	10.3	10.2	9.9
Share of idle wells in total oil production wells, %					
LUKOIL	17.9	16.8	15.4	15.3	14.7
National average	23.6	19.6	17.5	16.4	16.0
Watercut of oil wells, %					
LUKOIL	76.4	77.8	79.6	80.9	82.2
National average	81.0	82.2	83.3	86.2	84.7
Depth of refining, %					
LUKOIL	75.4	77.5	76.2	74.0	76.0
National average	71.1	71.3	71.7	71.4	71.5
Light products yield, %					
LUKOIL	50.2	51.1	50.2	49.9	50.4
National average	53.5	54.0	55.3	55.1	56.0
Share of high-octane gasoline in overall production of motor gasoline, %					
LUKOIL	61.4	69.0	76.6	83.5	87.0
National average	56.1	58.3	68.7	73.9	77.2