

LUKOIL IN RUSSIA AND THE WORLD



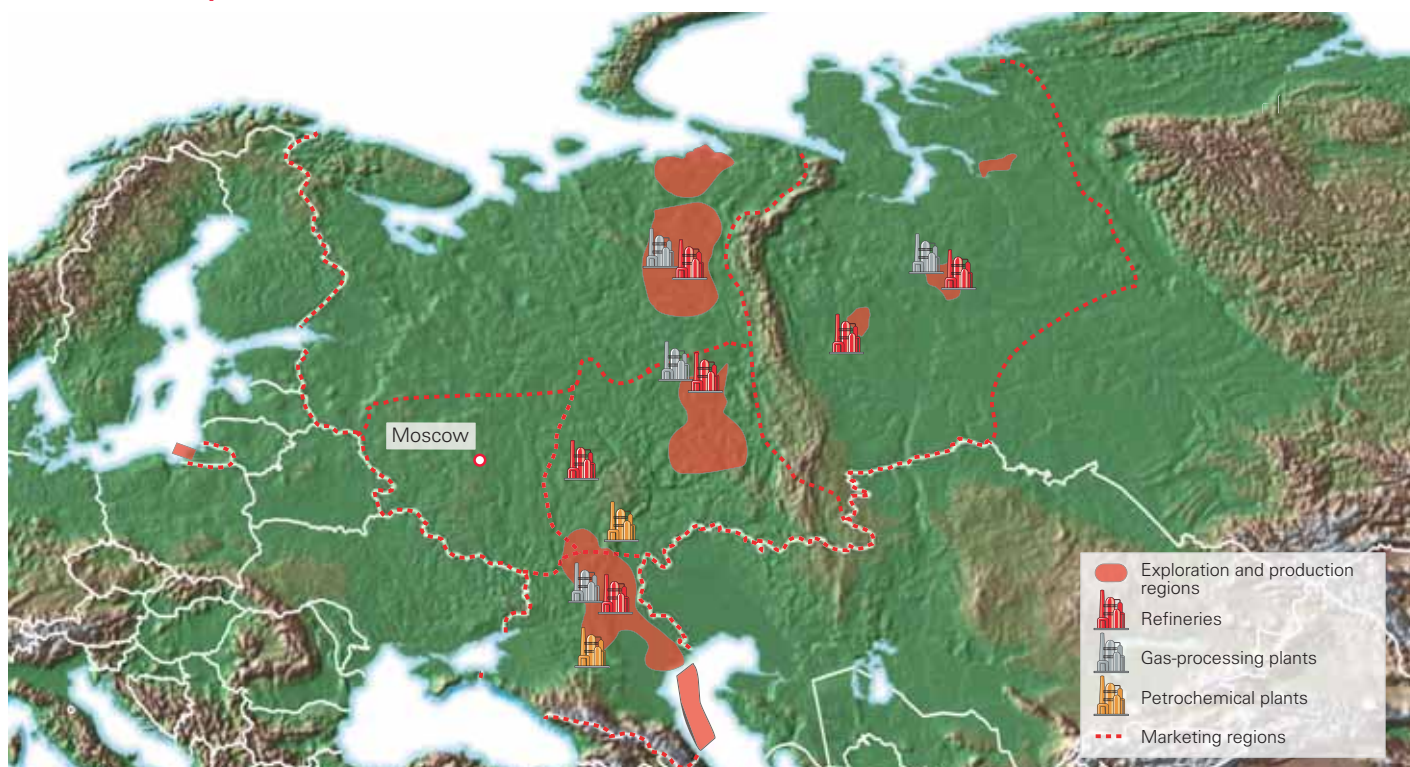
Share of LUKOIL Group in the global oil & gas industry, %

	2004	2005	2006	2007	2008
Proved oil reserves	1.32	1.32	1.28	1.25	1.15
Proved gas reserves	0.40	0.41	0.43	0.45	0.45
Proved hydrocarbon reserves	0.90	0.91	0.90	0.88	0.82
Oil production	2.14	2.20	2.32	2.35	2.29
Gas production	0.24	0.27	0.56	0.56	0.63
Hydrocarbon production	1.48	1.52	1.69	1.70	1.68
Refining capacities	1.38	1.37	1.35	1.34	1.51
Refinery throughputs	1.20	1.28	1.31	1.39	1.50

Share of Russian entities of LUKOIL Group in the Russian oil & gas industry, %

	2004	2005	2006	2007	2008
Proved oil reserves	20.2	20.0	19.4	18.9	18.3
Proved gas reserves	1.4	1.4	1.5	1.5	1.5
Proved hydrocarbon reserves	5.7	5.7	5.7	5.7	5.3
Oil production wells	17.0	17.4	17.4	17.5	17.7
Oil production	18.03	18.36	18.64	18.54	18.41
Gas production	0.79	0.89	2.14	2.09	2.14
Hydrocarbon production	8.98	9.27	10.06	10.09	10.14
Oil exports	20.75	18.94	17.92	16.66	16.52
Refining capacities	15.6	15.4	16.2	16.2	16.2
Refinery throughputs	18.32	18.05	18.05	18.69	18.75
Petroleum product exports	17.42	17.21	20.04	22.35	22.36

LUKOIL Group activities in Russia

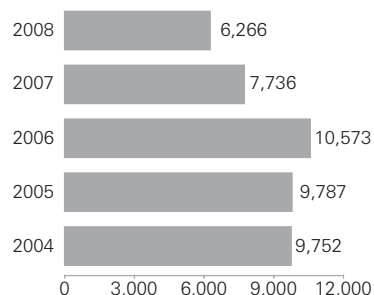


Comparison of LUKOIL Group indicators in Russia with national averages

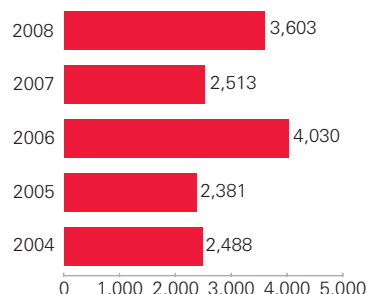
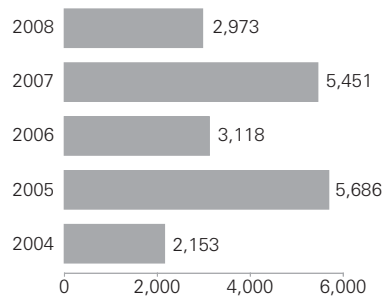
	2004	2005	2006	2007	2008
Flow rate of oil wells, tons per day					
LUKOIL	10.7	11.1	11.2	11.0	10.5
National average	10.3	10.4	10.3	10.2	9.9
Share of idle wells in total oil production wells, %					
LUKOIL	17.9	16.8	15.4	15.3	14.7
National average	23.6	19.6	17.5	16.4	16.0
Watercut of oil wells, %					
LUKOIL	76.4	77.8	79.6	80.9	82.2
National average	81.0	82.2	83.3	86.2	84.7
Depth of refining, %					
LUKOIL	75.4	77.5	76.2	74.0	76.0
National average	71.1	71.3	71.7	71.4	71.5
Light products yield, %					
LUKOIL	50.2	51.1	50.2	49.9	50.4
National average	53.5	54.0	55.3	55.1	56.0
Share of high-octane gasoline in overall production of motor gasoline, %					
LUKOIL	61.4	69.0	76.6	83.5	87.0
National average	56.1	58.3	68.7	73.9	77.2

GEOLOGICAL EXPLORATION

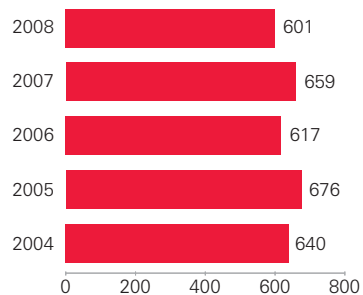
2D seismic prospecting, km



Geo-electrics, km


 3D seismic prospecting, km²


Proved hydrocarbon reserve extensions and discoveries, mln boe



Geological exploration

	2004	2005	2006	2007	2008
2D seismic prospecting, km	9,752	9,787	10,573	7,736	6,266
3D seismic prospecting, km ²	2,153	5,686	3,118	5,451	2,973
VSP*, wells	45	40	33	30	15
Geo-electrics, km	2,488	2,381	4,030	2,513	3,603

*Vertical seismic profiling.

Exploration drilling by regions, th. meters

	2004	2005	2006	2007	2008
Total	118	131	162	143	150
<i>Russia</i>	111	119	139	130	123
Western Siberia	44	44	60	54	63
Urals	11	11	9	9	9
Volga	17	23	29	31	17
including Caspian	0	2	2	4	0
Timan-Pechora	24	26	27	18	18
Bolshekhetskaya Depression	4	6	4	6	4
Other	11	9	10	12	12
<i>International</i>	7	12	23	13	27

Number and average depth of exploration wells drilled in Russia

	2004	2005	2006	2007	2008
Number of wells	47	28	40	49	41
Average depth, meters	2,541	2,548	2,417	2,797	2,553

Number of newly discovered fields and strata at existing fields

	2004	2005	2006	2007	2008
Fields	13	5	10	7	8
Oil (including oil, gas and condensate)	12	5	9	7	8
Gas	0	0	1	0	0
Gas condensate	1	0	0	0	0
Strata	10	11	15	17	18
Oil	10	11	15	13	18
Gas	0	0	0	0	0
Gas condensate	0	0	0	4	0

Proved reserve extensions and discoveries, mln boe

	2004	2005	2006	2007	2008
Oil	624	506	551	518	529
Gas	16	170	66	141	72
Hydrocarbons	640	676	617	659	601